



DESIGN INSPIRATION provided by the client

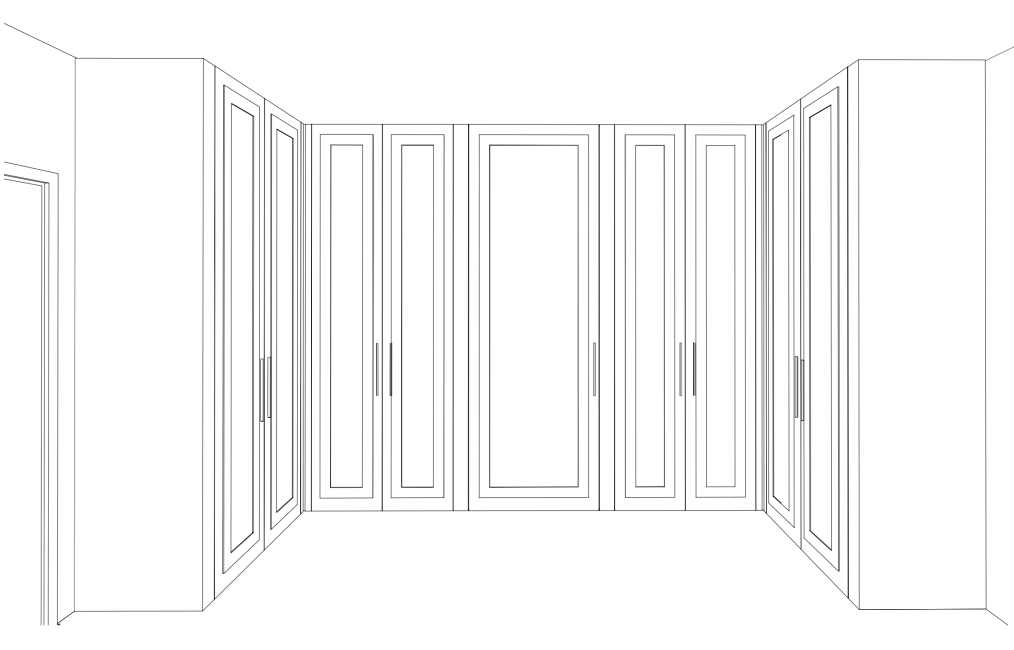


DESIGN INSPIRATION provided by the client

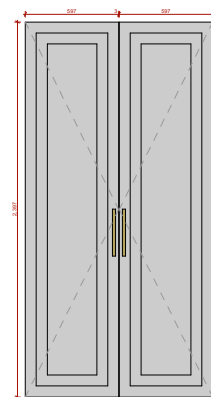
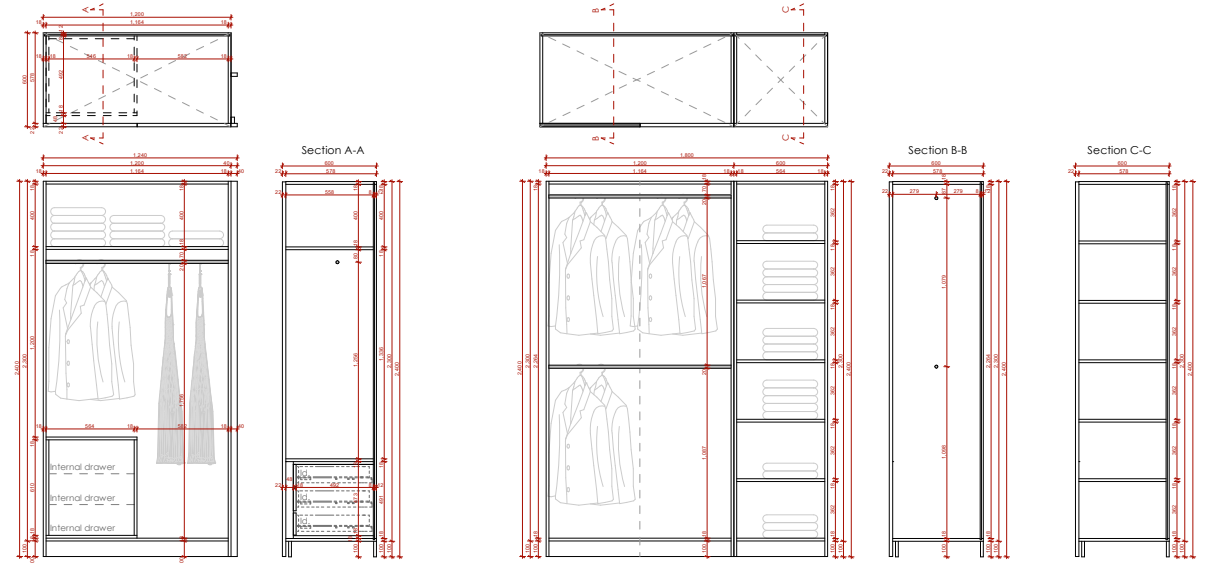
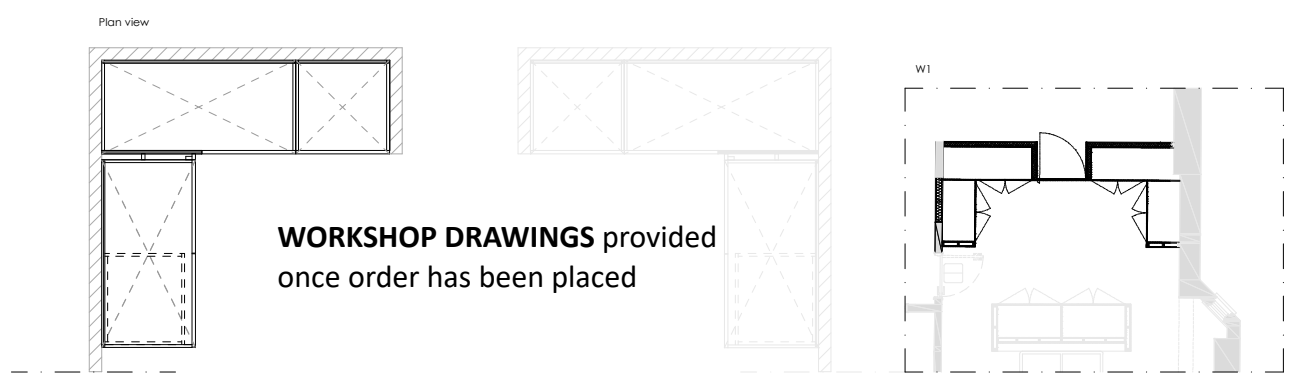
## Bespoke WARDROBE case study - ***Modern Shaker Style with Antique Mirror Inlays***

### THE PROCESS:

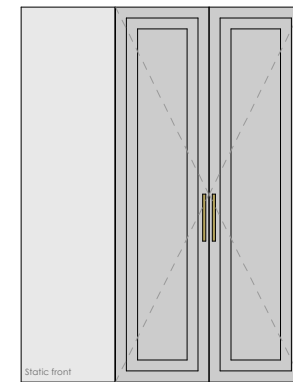
- 1) Client provides us with DESIGN BRIEF including images or *Pinterest* board
- 2) Client provides us with ARCHITECTURAL PLANS or we can arrange a SITE SURVEY
- 3) AGMJ creates 3D VISUALS & provides a DETAILED QUOTATION
- 4) Once quotation approved & deposit paid, we start working on INTERNAL LAYOUTS & CONFIGURATIONS creating a full set of WORKSHOP DRAWINGS
- 5) Once all designs & finishes have been approved by the client, AGMJ can have these wardrobes built, delivered & installed within 7-8 WEEKS



Bespoke WARDROBE case study  
*Modern Shaker Style with Antique Mirror Inlays*



- Behind wardrobe:  
MDF hardboard 8mm
- Doors material
- External material
- Internal material
- Each door has  
4 BLUM Hinges / 90°
- Handles
- Internal drawers



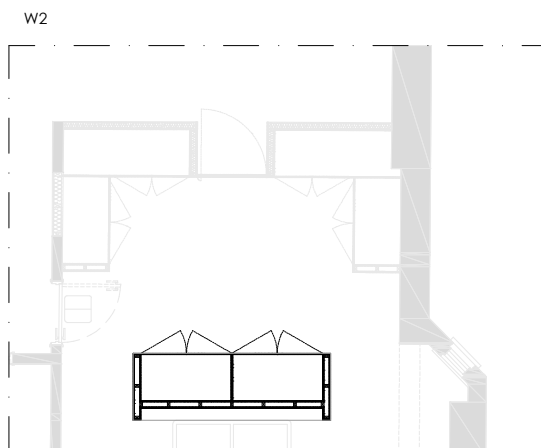
- Behind wardrobe:  
MDF hardboard 8mm
- Doors material
- External material
- Internal material
- Each door has  
4 BLUM Hinges / 90°
- Handles
- Internal drawers



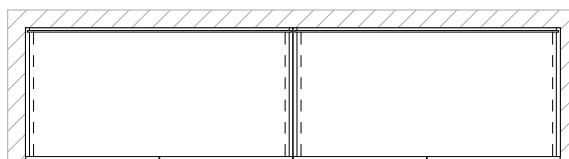
**AG MERIDIAN  
 JOINERY**  
 EST. 1965



Bespoke WARDROBE case study  
*Modern Shaker Style with Antique Mirror Inlays*

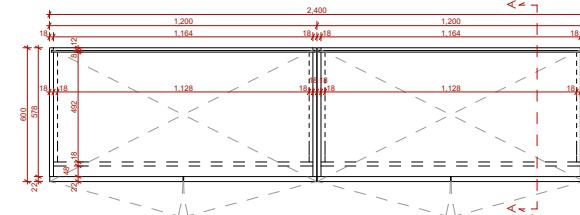


Plan view

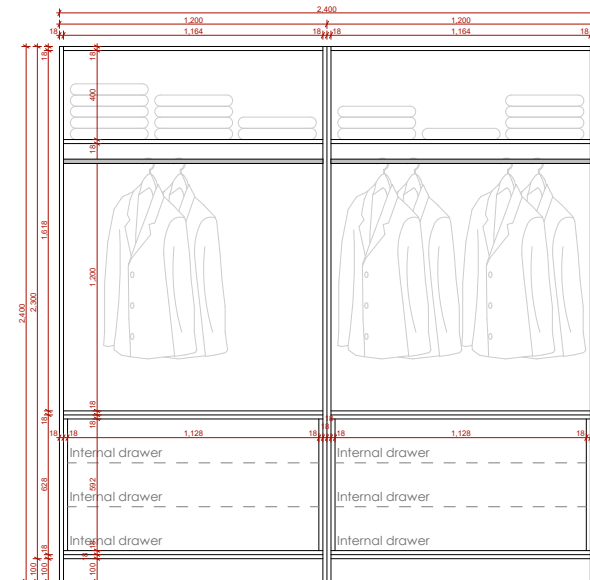


**WORKSHOP DRAWINGS** provided once order has been placed

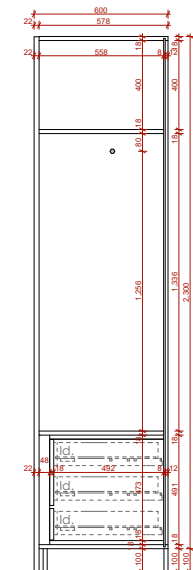
Plan view



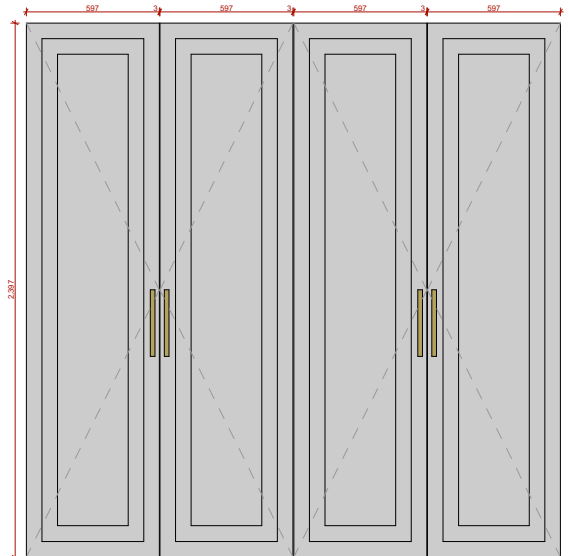
Front view



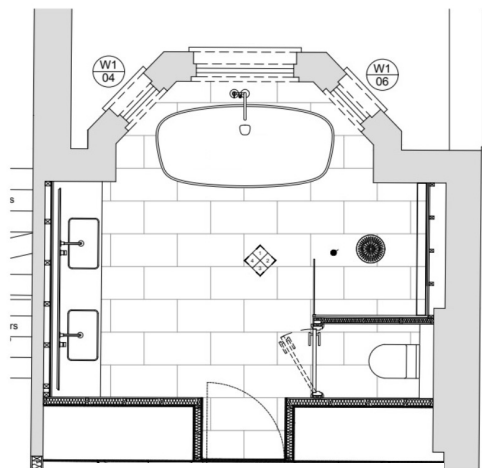
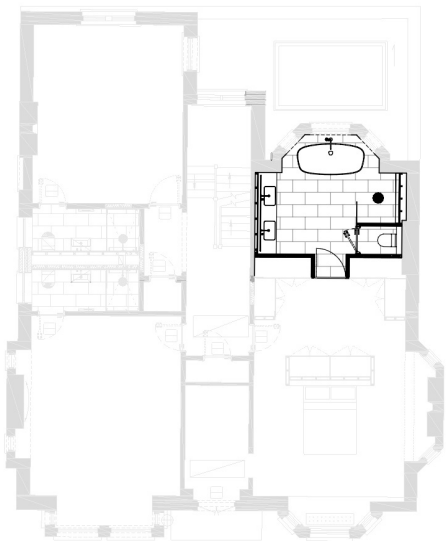
Section A-A



Doors



- Behind wardrobe: MDF hardboard 8mm
- Doors material
- External material
- Internal material
- Each door has 4 BLUM Hinges / 90°
- Handles
- Internal drawers



**Bespoke VANITY**  
3D VISUALS for a residential project  
made from a *premium*  
**OAK VENEER**



*DESIGN INSPIRATION* provided by the client